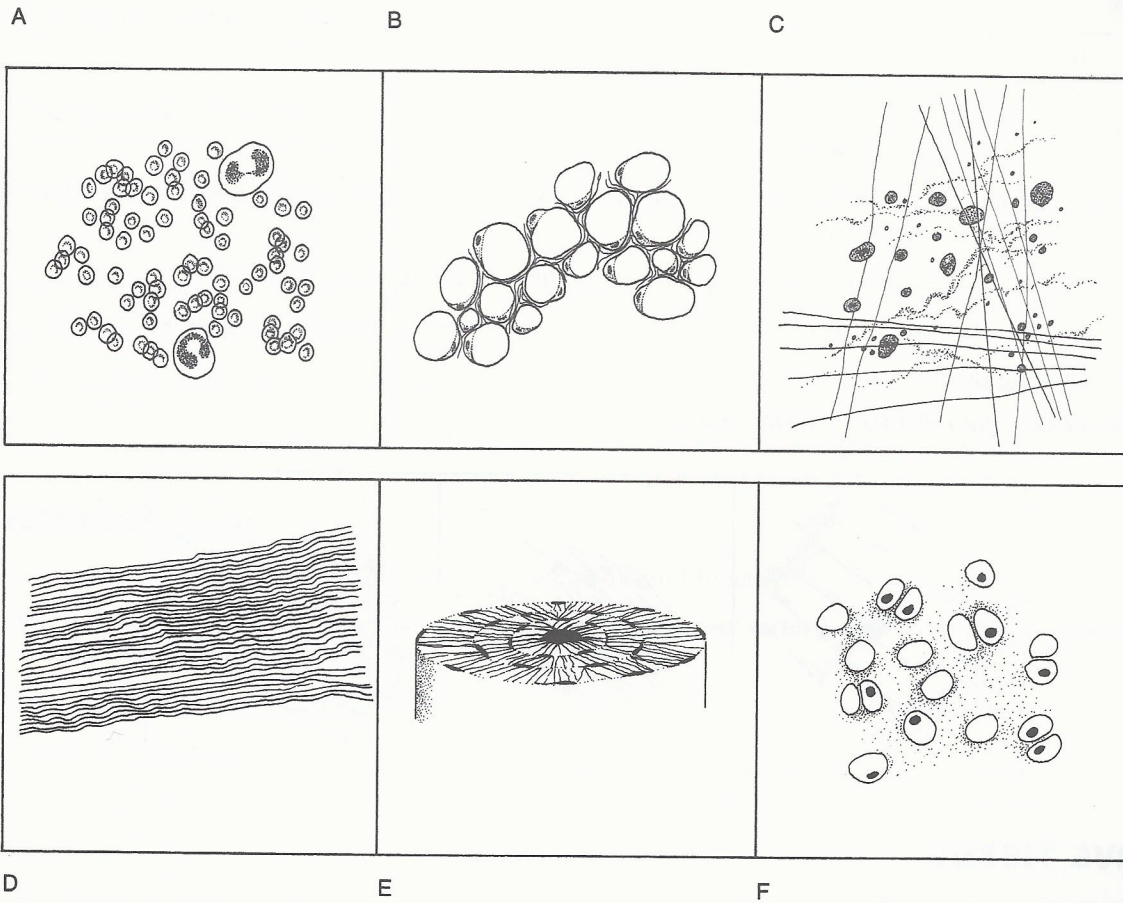


2. The following diagrams depict some of the types of connective tissue.

*Label each type with its complete name.*



**MUSCLE TISSUE**

1. All three types of muscle tissue are specialized to contract and bring about movement of some kind.

*Each of the following statements describes a structural or functional aspect of one of the three types of muscle tissue. Indicate the type to which the statement applies by writing SK for skeletal muscle, SM for smooth muscle, or C for cardiac muscle on the line before the statement.*

- 1) \_\_\_\_\_ The cells are tapered and have one nucleus each.
- 2) \_\_\_\_\_ Attached to bones, moves the skeleton.
- 3) \_\_\_\_\_ Enables arteries to constrict or dilate to maintain blood pressure.
- 4) \_\_\_\_\_ The cells are branched and each has one nucleus.
- 5) \_\_\_\_\_ Also called striated muscle tissue, because the cylindrical cells appear to have striations.
- 6) \_\_\_\_\_ Produces a significant amount of body heat.