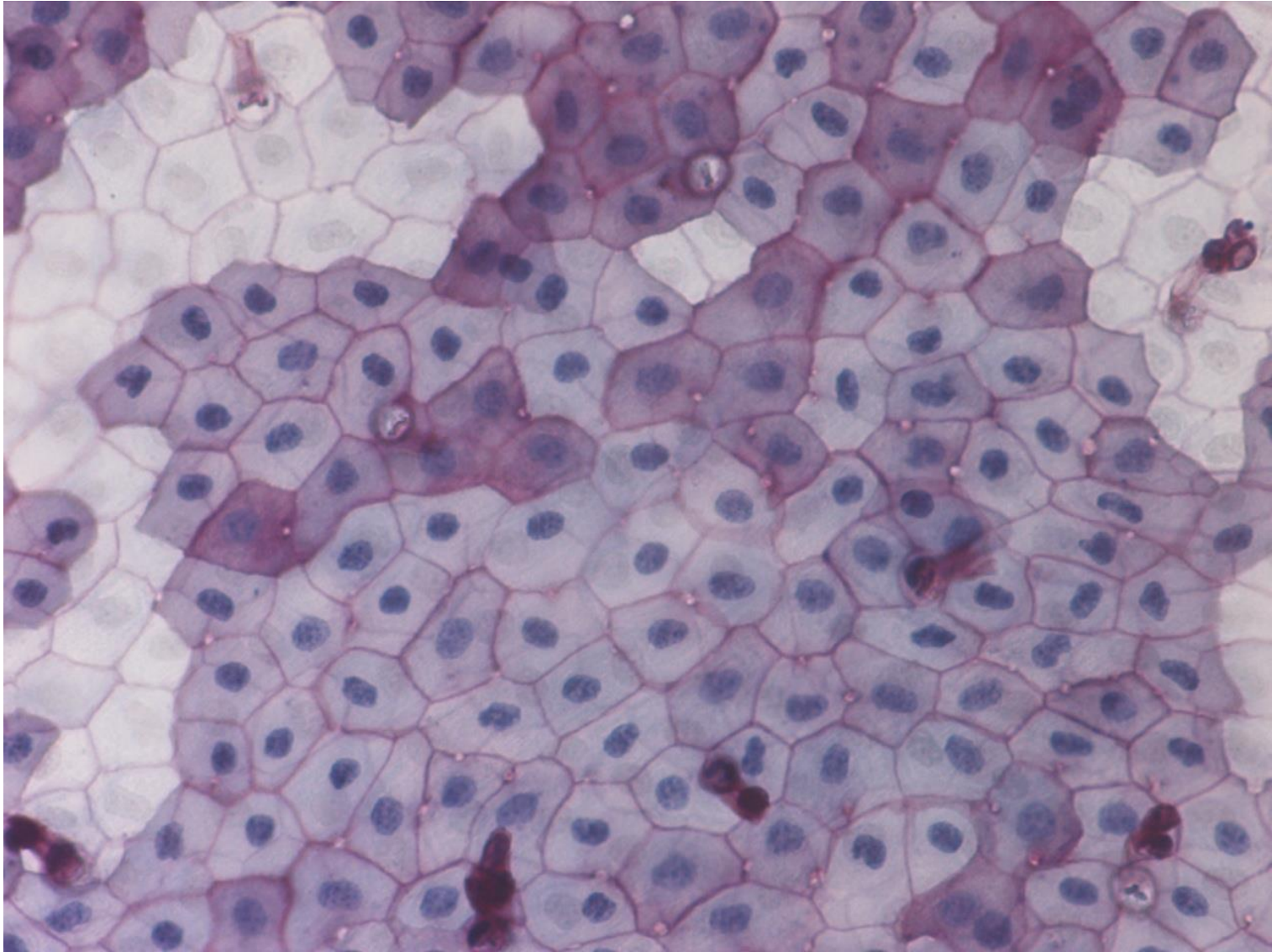


Histology of Human Tissue

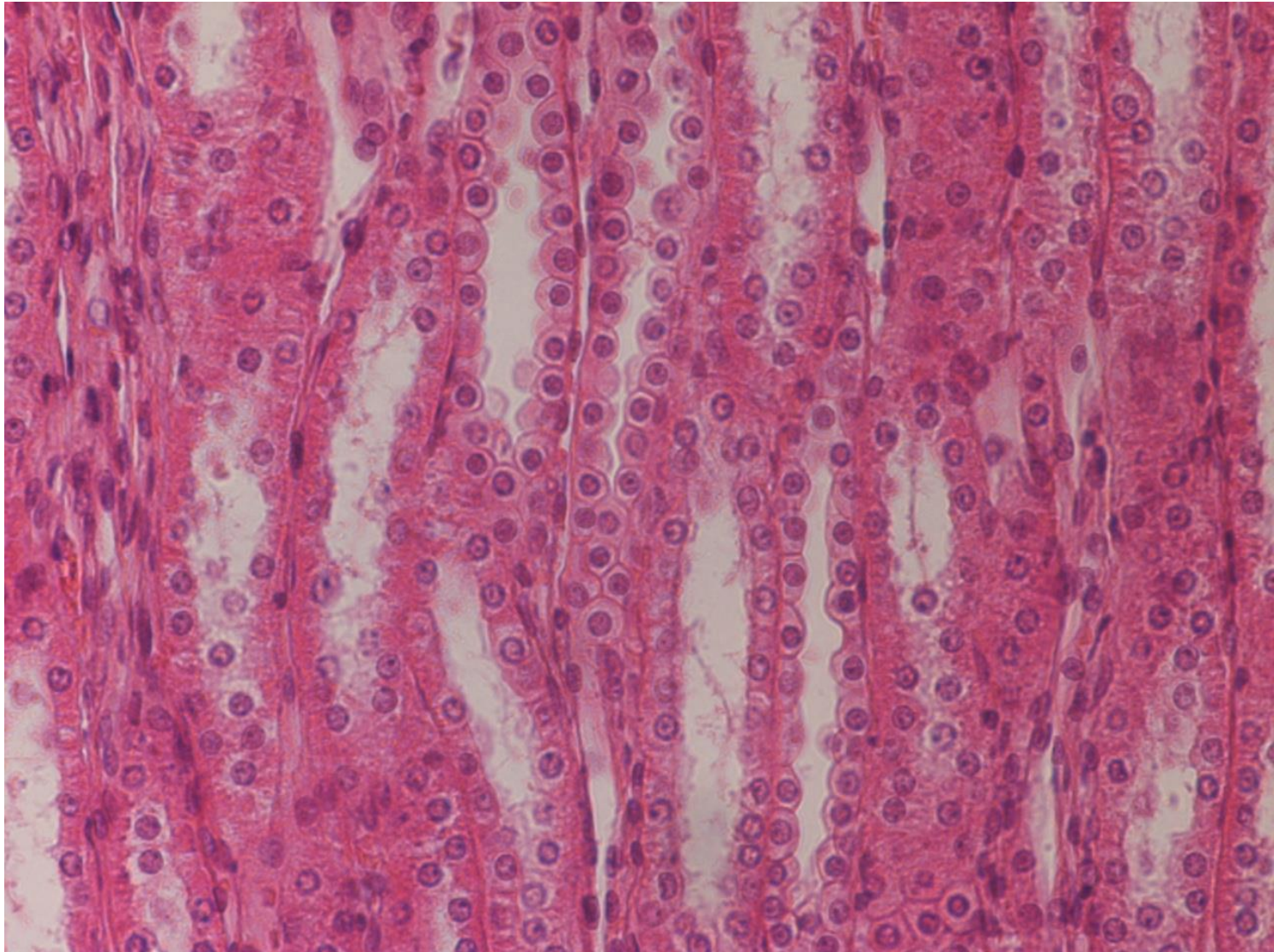
Ch.4

EPITHELIAL TISSUE

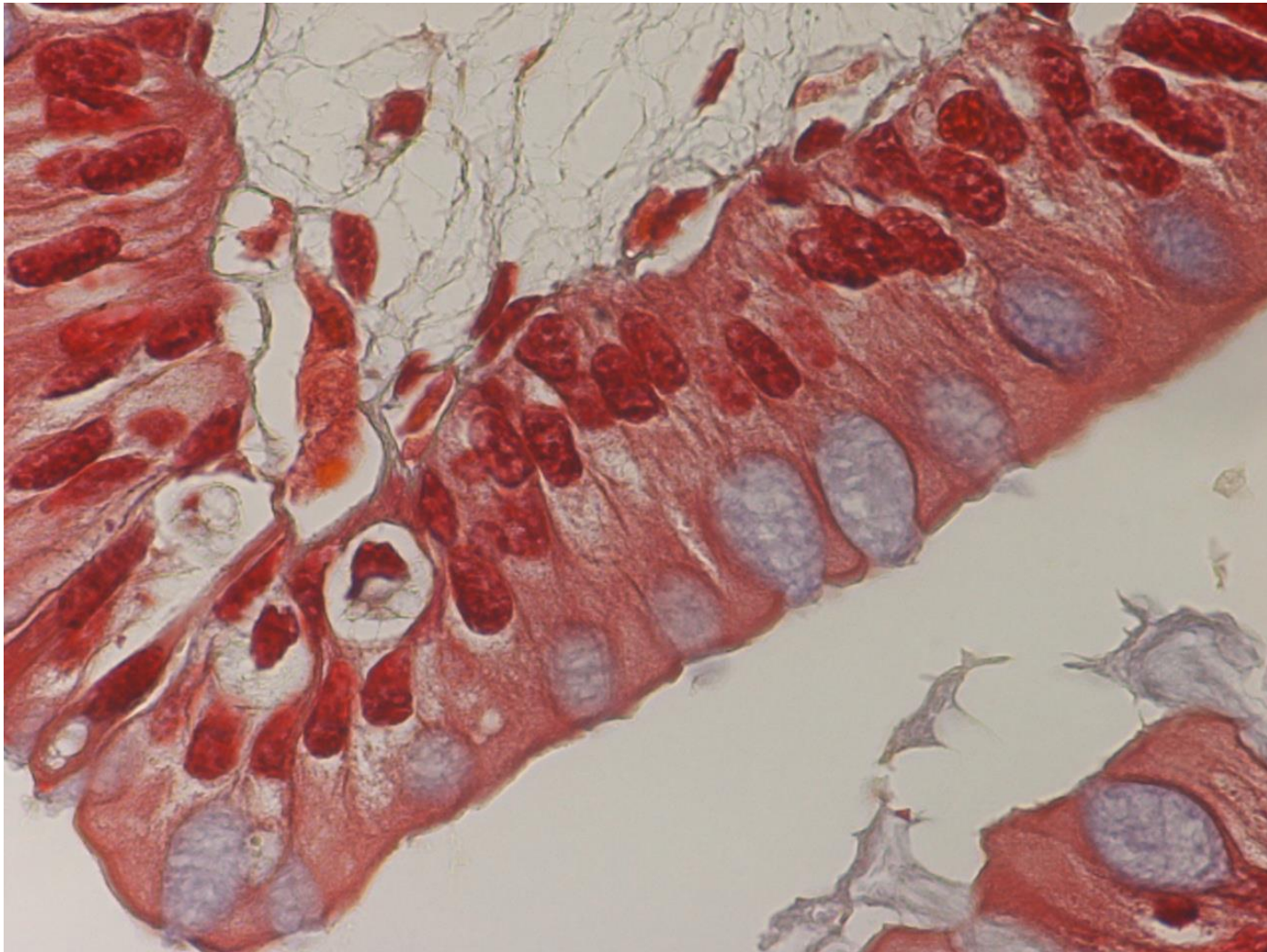
Simple squamous epithelium 400x

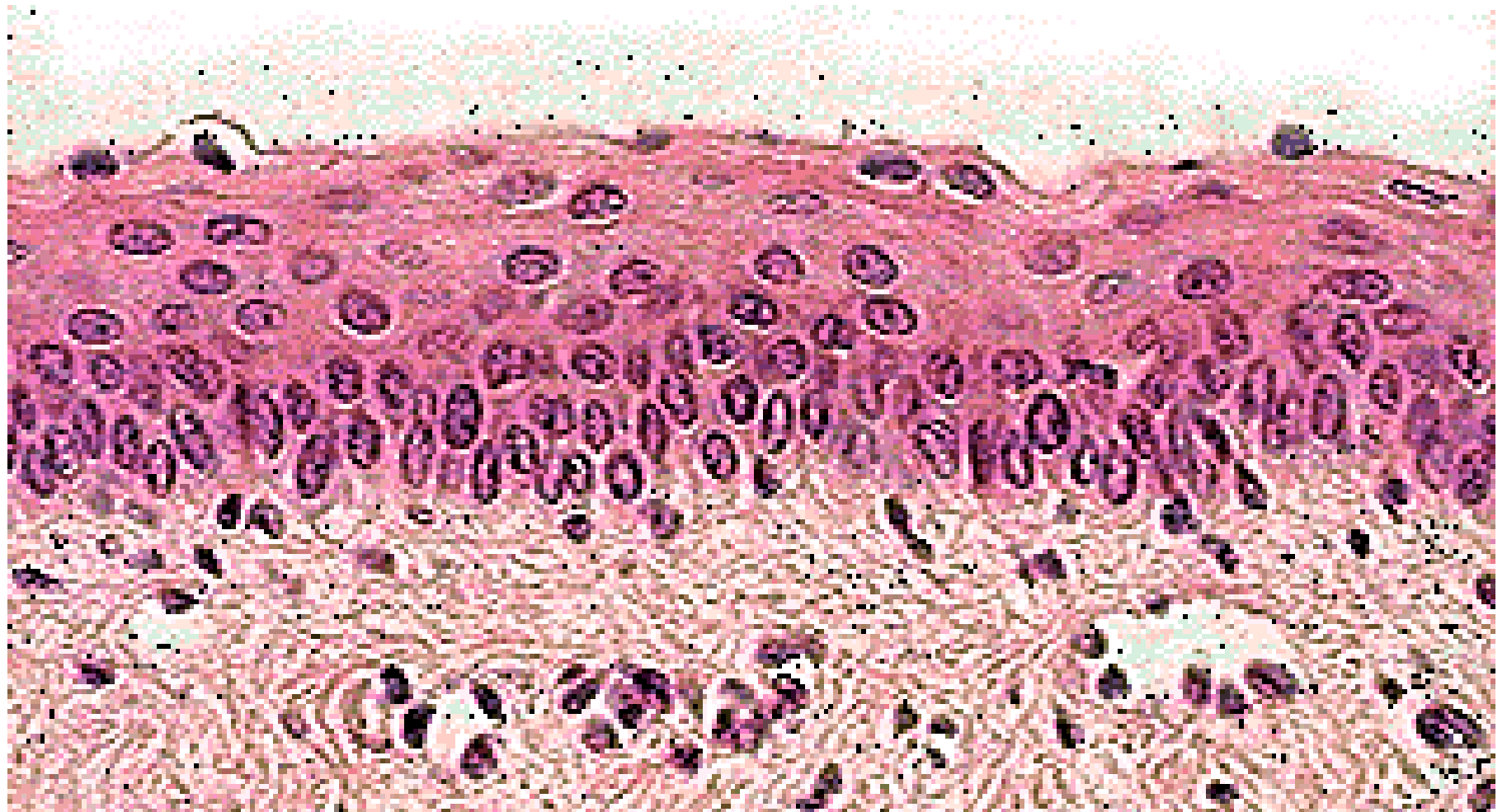


Simple cuboidal epithelium 400x

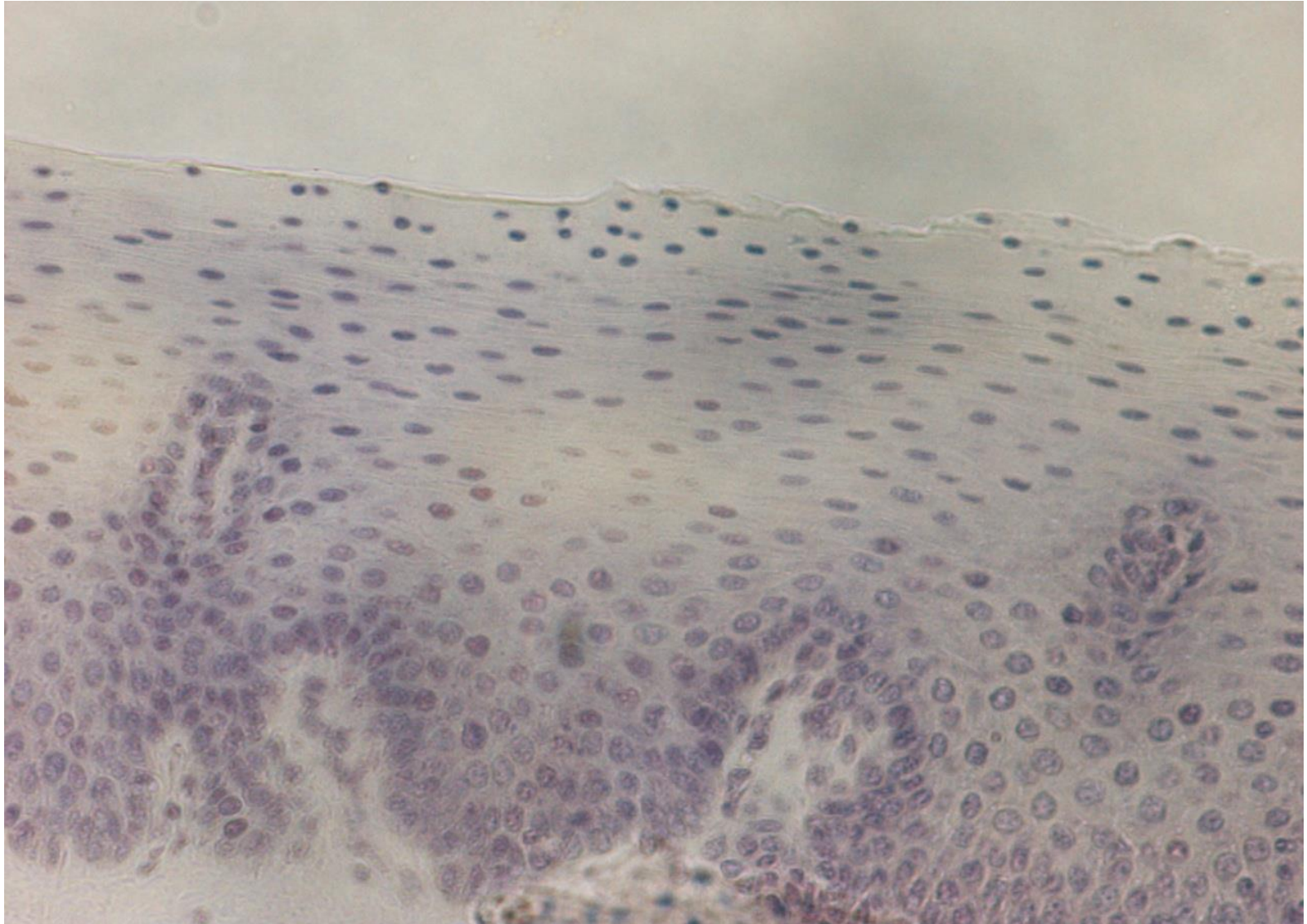


Simple columnar epithelium 400x

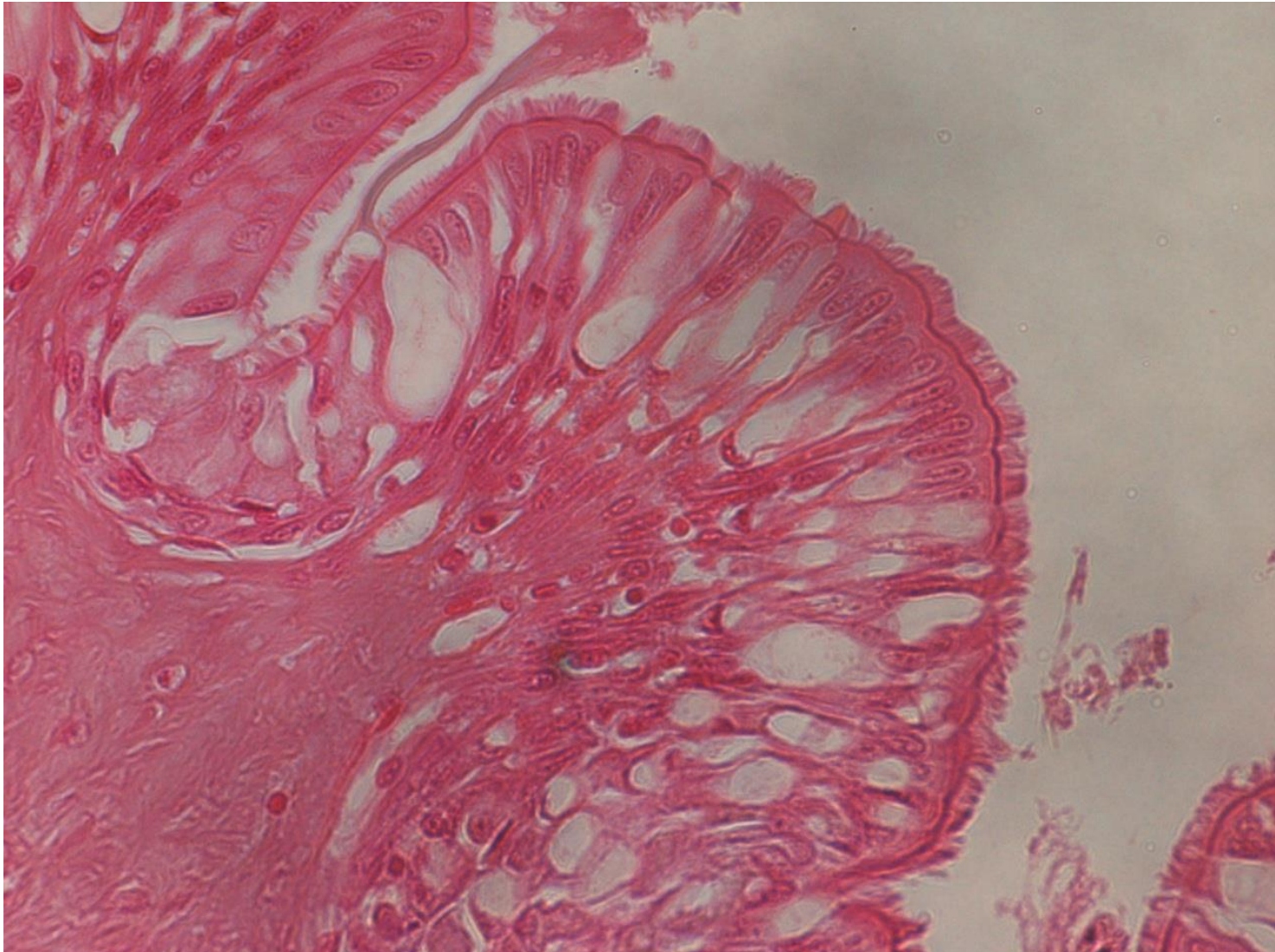




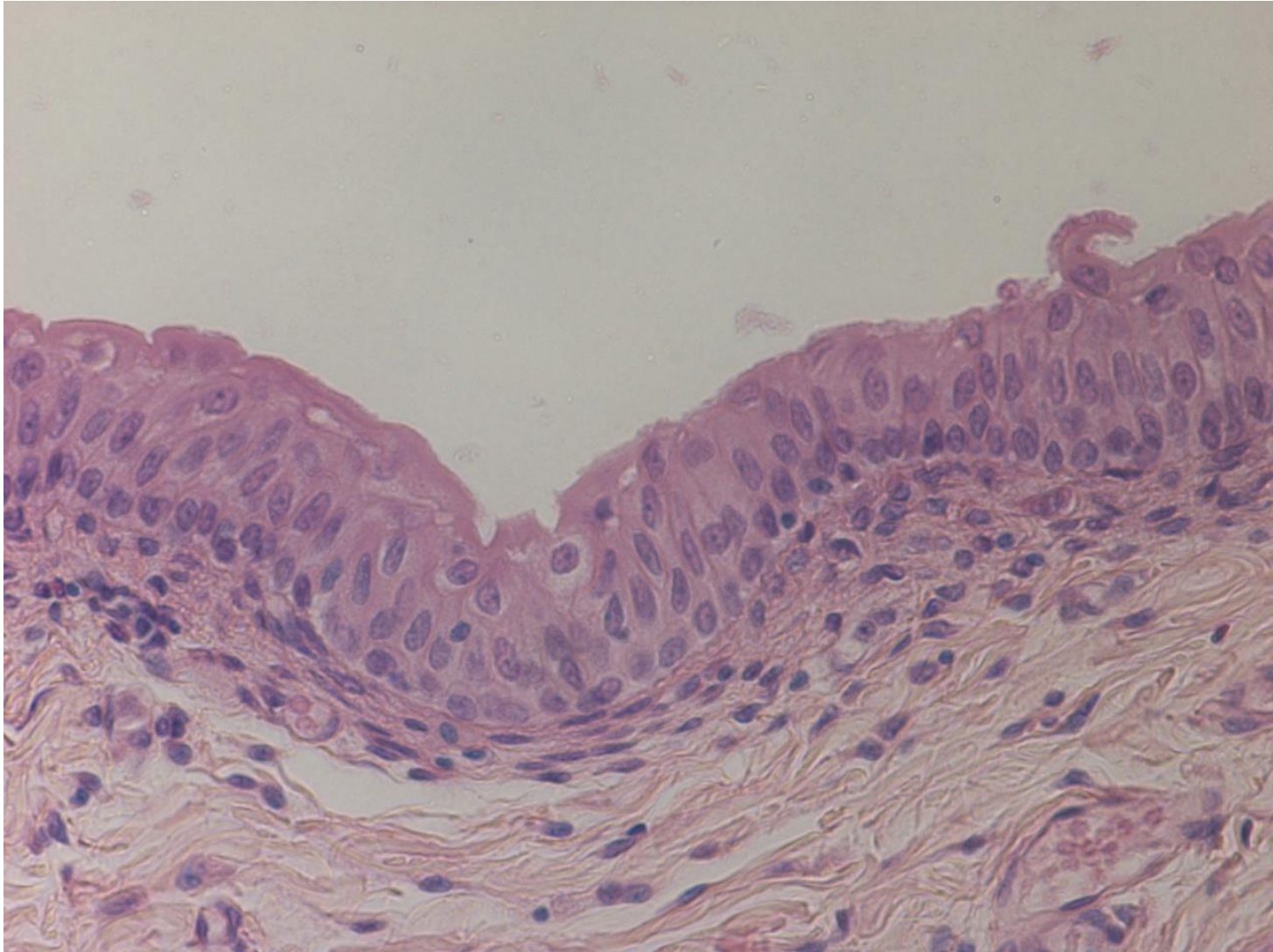
Stratified squamous epithelium 400x



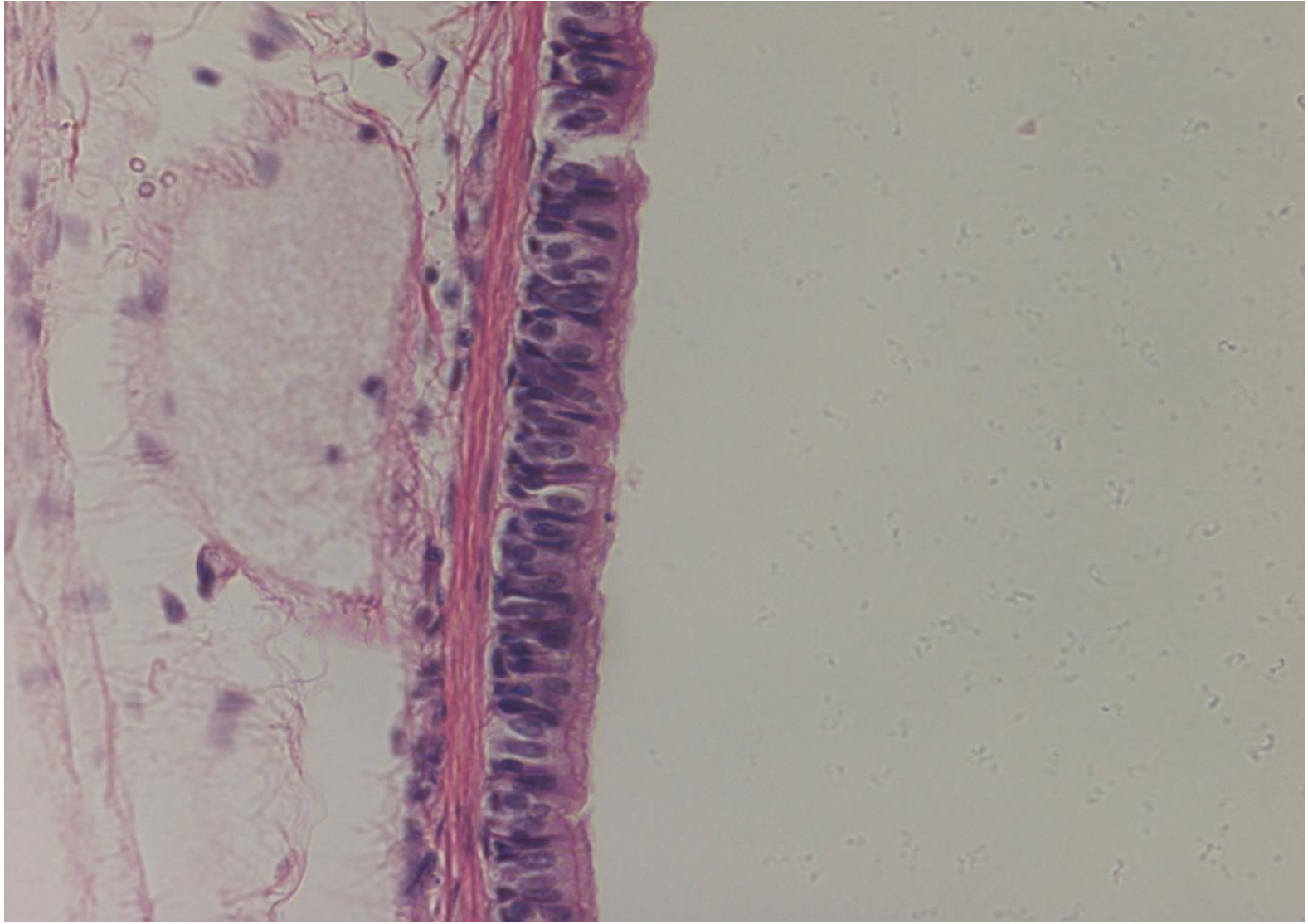
Stratified columnar epithelium 400x



Transitional epithelium 400x



Pseudostratified ciliated columnar epithelium 400x

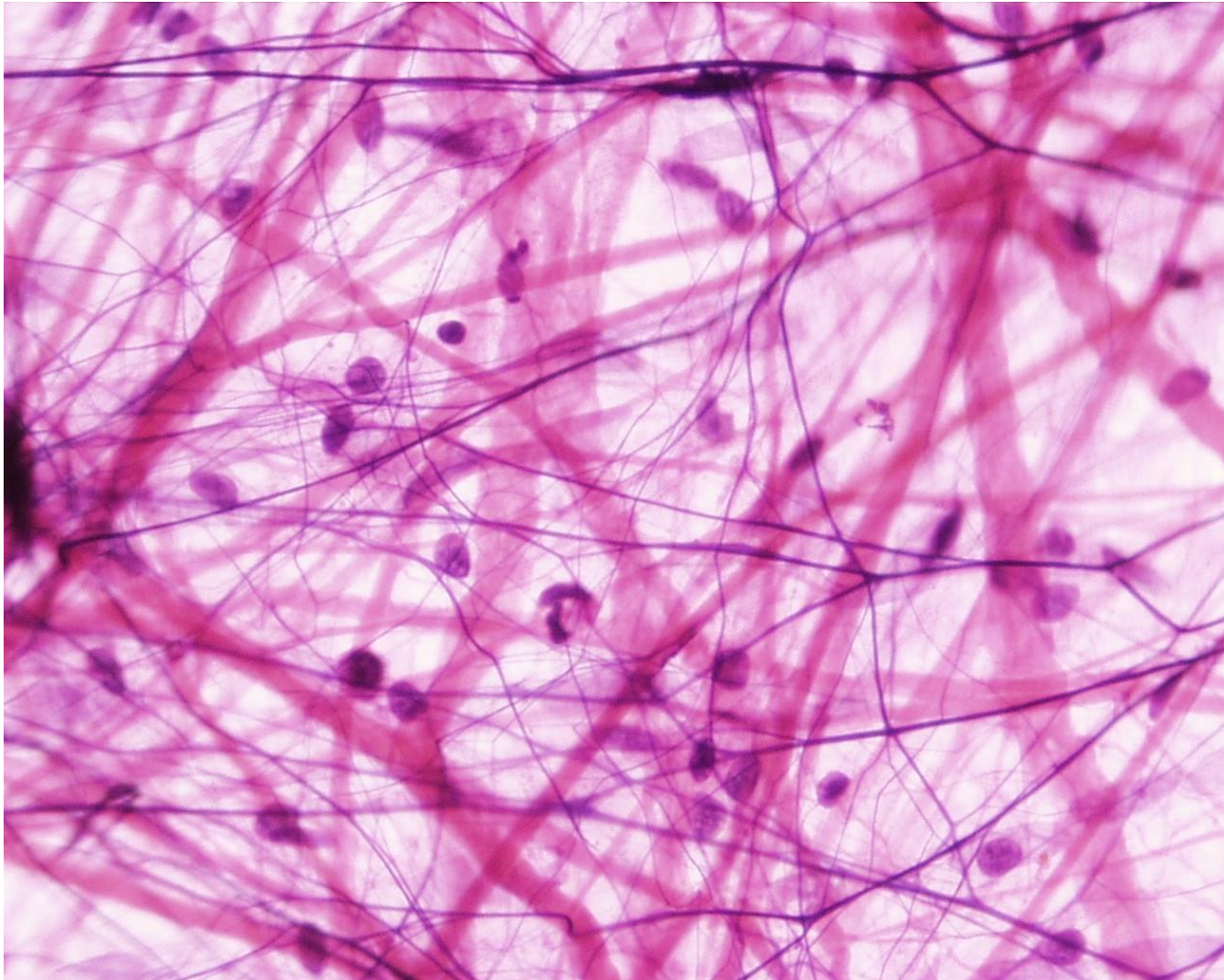


CONNECTIVE TISSUE PROPER

- Loose
- Dense

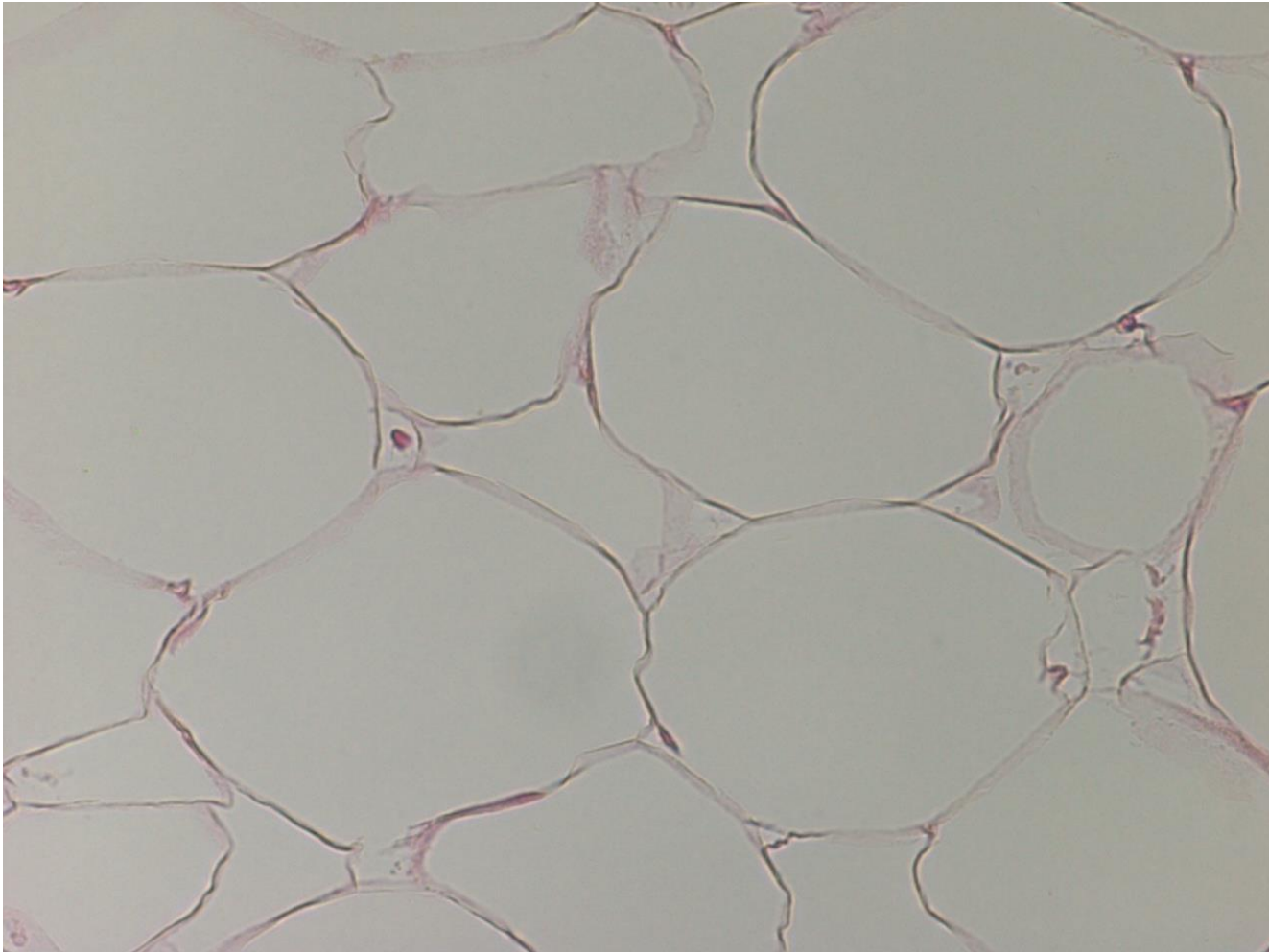
Aerolar connective tissue 400x

(Loose connective)

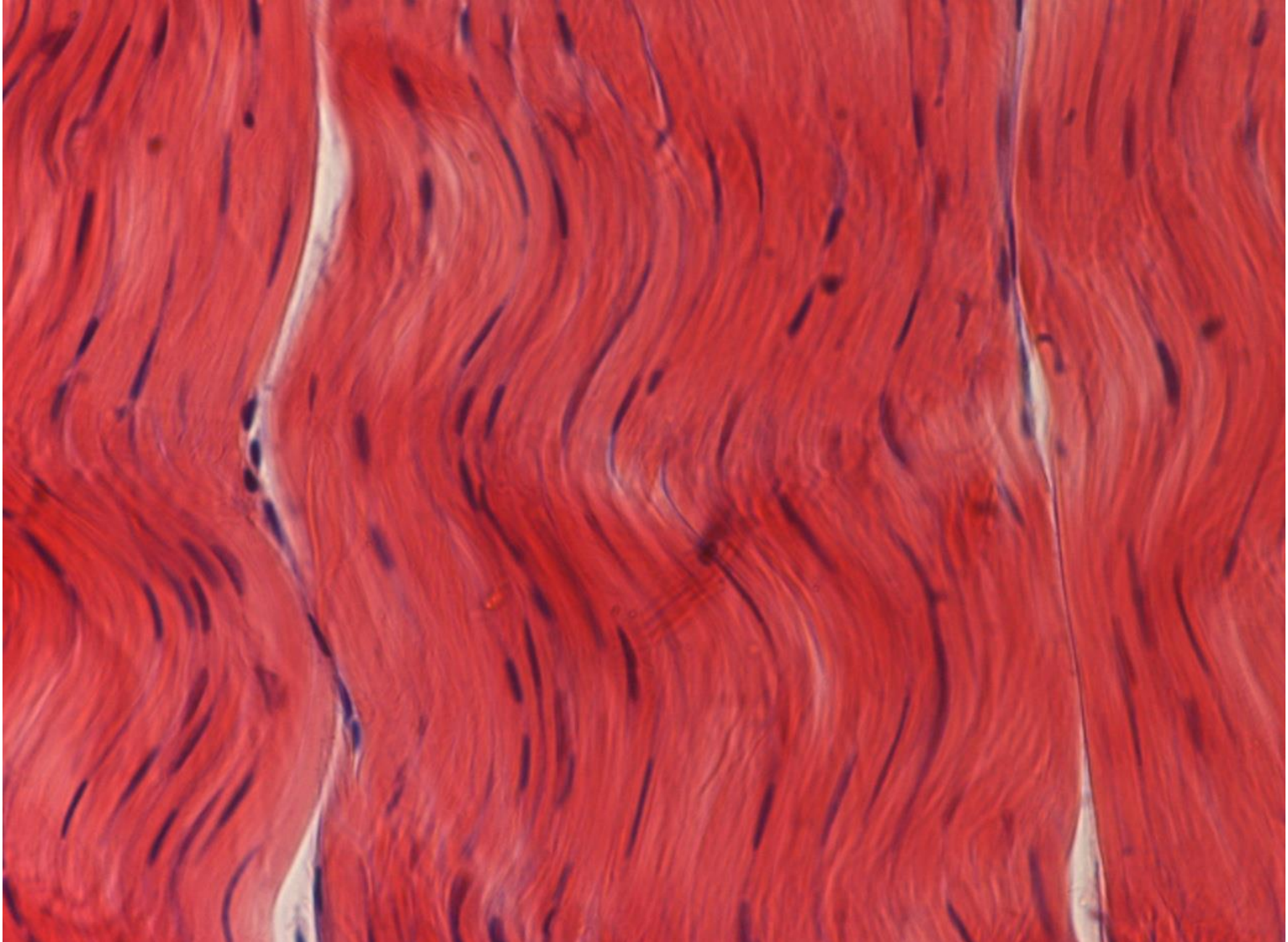


Adipose tissue 400x

(Loose connective)



White dense(regular) connective tissue 400x (dense)

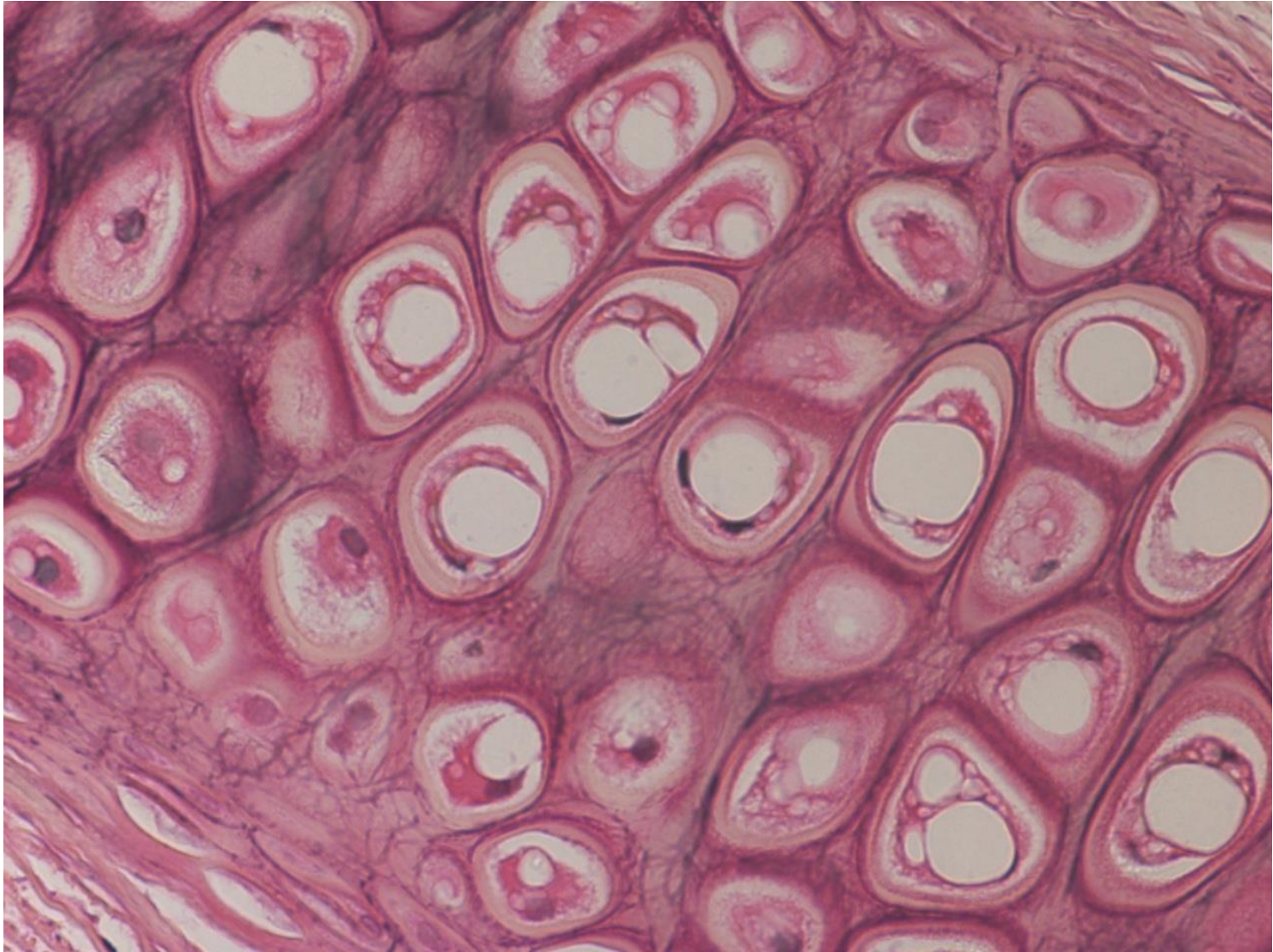


Supporting connective tissue

- Cartilage
 - Solid, rubbery matrix
- Bone
 - Solid, crystalline matrix

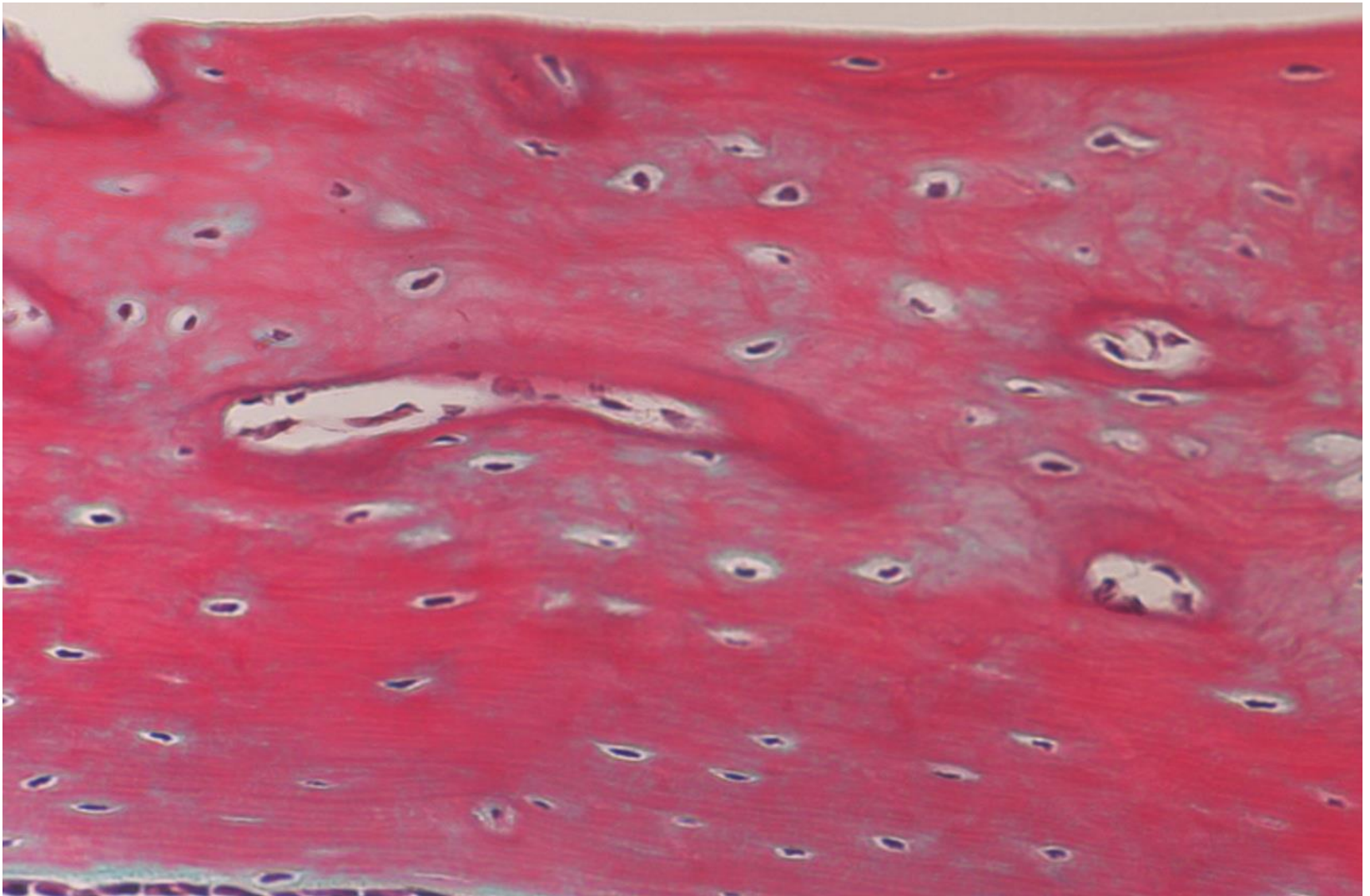
Elastic Cartilage 400x

p.109



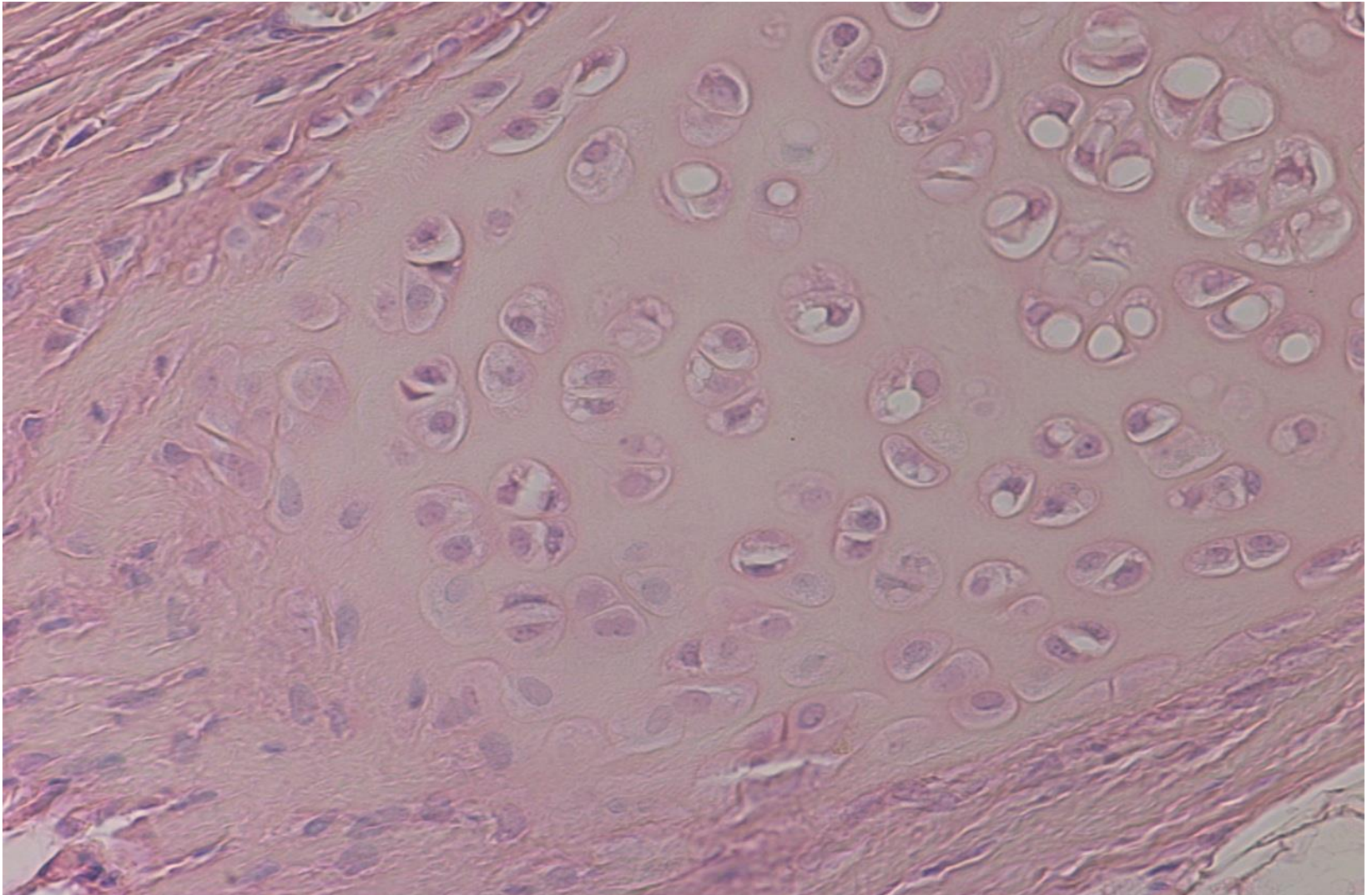
Fibrous Cartilage 400x

p.109

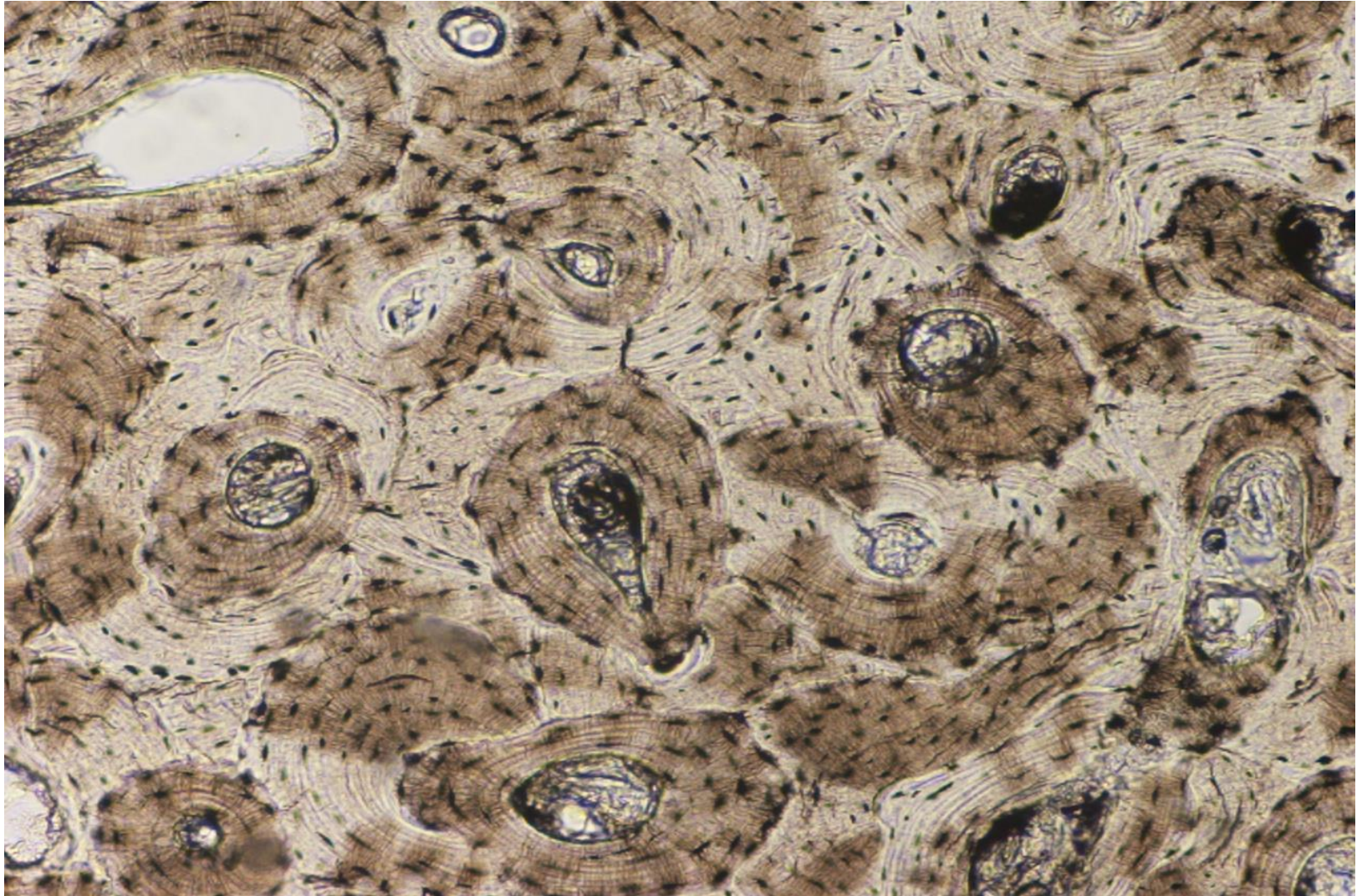


Hyaline Cartilage 400x

p.109



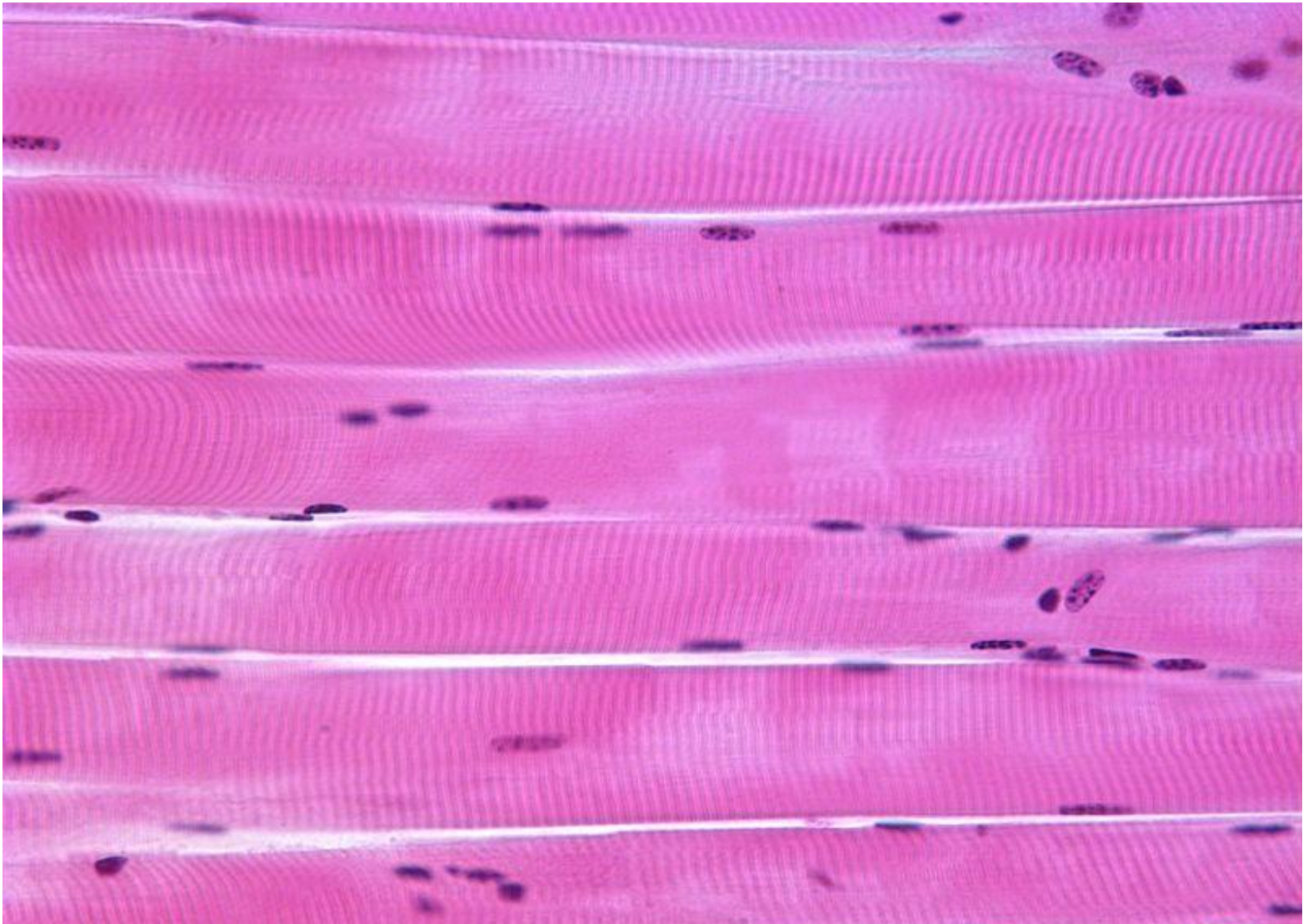
Compact bone 100x



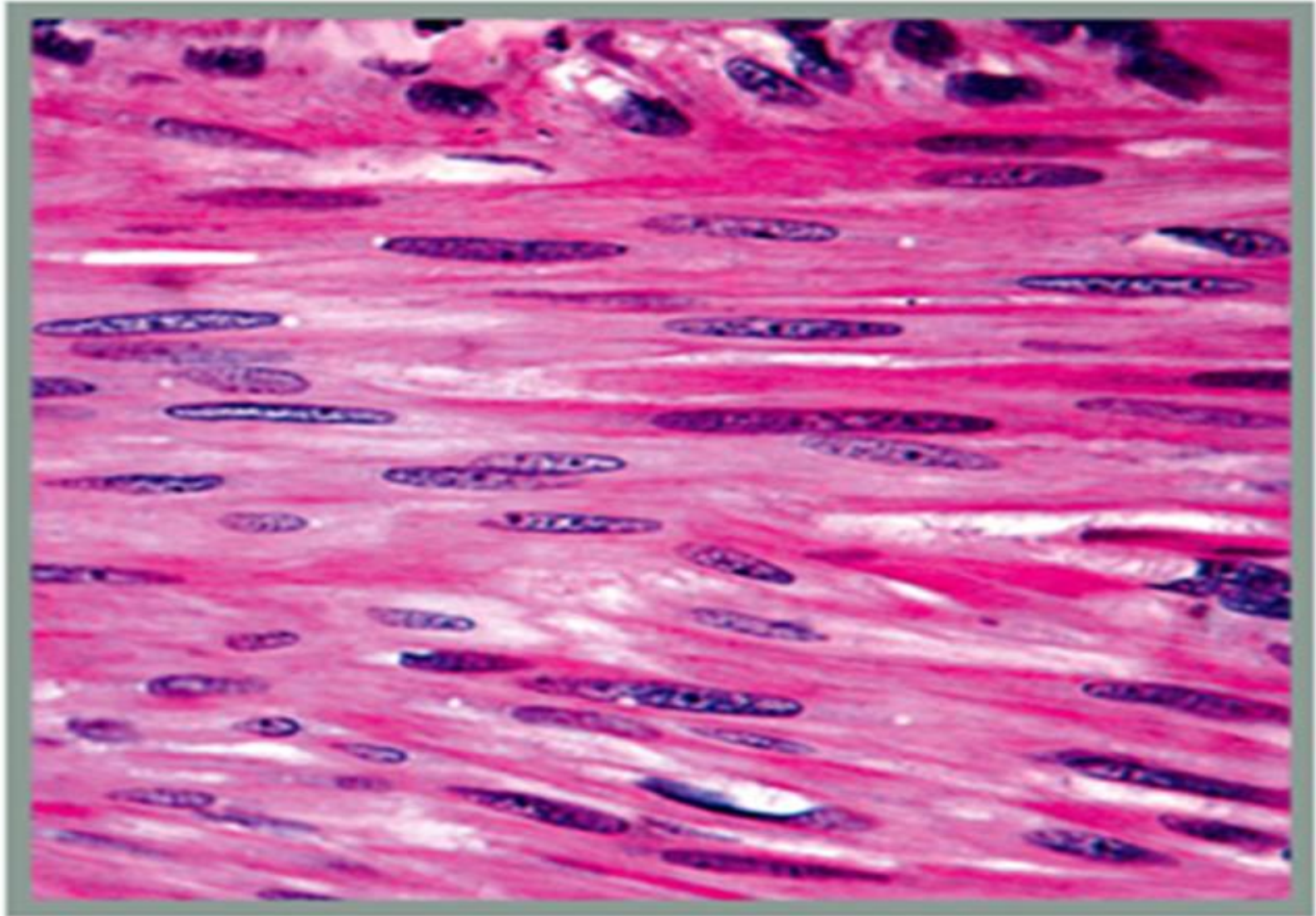
Muscle Tissue

- Skeletal
- Cardiac
- Smooth

Skeletal Muscle tissue 100x



Smooth muscle tissue 400x



Cardiac Muscle tissue 400x



Neural Tissue

